

Campus construction boom underway

The greatest capital improvement undertaking in OSU's history is moving forward dramatically this year. More than \$825 million in construction will transform the Stillwater campus and enhance academics, student life, athletics and infrastructure.

In addition to the work being done on the west end zone of Boone Pickens Stadium, a number of other major non-athletic projects are already underway or will be launched during the fall semester. Those projects are listed below/right along with their scheduled groundbreakings. A groundbreaking was already held for the Interdisciplinary Research and Science Building July 26, and, yesterday, a groundbreaking was held for the Multimodal Transportation Terminal.



Multimodal Transportation Terminal

U.S. Sen. Jim Inhofe, Oklahoma Lt. Gov. Jari Askins joined interim OSU President Marlene Strathe and Regents Chairwoman Lou Watkins to officially begin the construction of the Multimodal Terminal in a ceremonial groundbreaking yesterday. Expected to be completed August 2008, the \$23 million facility will include offices, more than 1,000 parking spaces and serve as a hub for OSU's community transit and shuttle buses.

North Classroom Building

A 50,000-square-foot new building, shared by OSU and NOC, with classrooms, two auditoriums, a student Success Center and coffee shop. Completion, spring 2009.

Location: SE corner of Hall of Fame and Monroe
Groundbreaking - September 14

Donald W. Reynolds School of Architecture

Renovation, remodel and expansion for the School of Architecture, providing studios, research labs, lecture rooms, an auditorium and offices. Completion, spring 2009.

Location: Current footprint south of Boone Pickens Stadium
Groundbreaking - TBA

Murray Hall

Renovation and remodel to house College of Arts & Sciences. Completion, spring 2009.

Location: Current footprint, on Monroe across from Theta Pond
Groundbreaking - November 14

Old Central

New foundation plus renovation and remodel to house Honors College. Completion, summer 2009.

Location: Current footprint, east of ConocoPhillips Alumni Center
Groundbreaking - October 10

Oklahoma Animal Disease Diagnostic Laboratory (OADDL)

Expansion to Center for Veterinary Health Sciences' Animal Disease Diagnostic Laboratory to provide additional, specialized laboratories. Completion, spring 2009.

Location: Current footprint, west end of Farm Road
Groundbreaking - November 1



Interdisciplinary Science Research Building

OSU/A&M Board of Regents Chairwoman Lou Watkins, Gov. Brad Henry, interim OSU System CEO and President Marlene Strathe and OSU Vice President of Research and Technology Transfer Stephen McKeever helped break ground July 26 on the site of the OSU Interdisciplinary Science Research Building. The single largest project of the Oklahoma Higher Education Capital Bond Program, the \$70 million, 124,000-square-foot facility will contain custom-designed facilities for research in biodiversity, biophysics, photonics, synthetic chemistry and advanced materials and provide laboratory spaces for a range of disciplines. It is expected to be completed in fall 2010.

Bud Seretean's lasting legacy



M. B. (Bud) Seretean died Aug. 13, but his legacy will live on at OSU and around the world. Access to the arts and education was at the center of his lifelong philanthropy, but health and fitness were the passions Seretean tirelessly worked to share with others, including his OSU family. His 2000 contribution to his alma mater doubled the size of the Seretean Wellness Center, which now serves the OSU and Oklahoma communities with fitness facilities, wellness clinics, occupational therapy and outreach programs promoting healthy living.

Seretean's dedication to practicing and promoting wellness culminated in his being awarded one of the first Lifetime Achievement Awards from the President's Council for Fitness and Sports

The carpet industry pioneer, successful entrepreneur, philanthropist, author and wellness proponent served as president of the OSU Foundation and conceived the Henry G. Bennett Award. He and T. Boone Pickens are the only alumni whose names adorn two buildings on campus.

Read about Seretean and other OSU alumni who have made a difference in "Oklahoma State Portraits: Celebrating the Centennial of Oklahoma Statehood."

Academics at a glance. . .



Zoology department, Arts and Sciences

Offers bachelor's degrees in biological science, physiology and zoology, and M.S. and Ph.D. degrees in zoology.

16 faculty and approximately 625 students

Department head: Dr. Loren Smith (2007)

Web-based learning: New department head Loren Smith co-discovered a new species of spider, *Ceratinella playa*, in Texas in 2007.



School of Teaching and Curriculum Leadership, Education

Offers bachelor's degrees in elementary, secondary and K-12 education and career and technical education; an M.S. in teaching, learning and leadership; and a Ph.D. in education.

31 faculty and approximately 1,300 students

Department head: Dr. Christine Ormsbee (2006)

Extra credit: The school's occupational education studies graduate program has ranked in the U.S. News & World Report's annual guide to "America's Best Graduate Schools" Top 10 since 1998.

OSU recognizes PLC scholars for 2007



These five freshmen took part in the President's Leadership Council retreat at Camp Redlands this summer. They are among 115 freshmen from across the nation to receive a \$1,500 PLC Scholarship at OSU this year. The scholarship is based on academic achievement, leadership potential and school and community service.

Each recipient takes a three-hour leadership class and serves on PLC. These students are also expected to conduct a leadership conference for Oklahoma high school seniors and participate in 40 hours of community service. Last year, PLC students performed more than 5,000 hours of community service.

OSU names new Regents Professors

Five faculty members were appointed Regents Professors by the Oklahoma State University A&M Board of Regents this summer, bringing the total of Regents Professors on campus to 46.

Regents Professor is the most prestigious rank that may be attained by a faculty member in the OSU system in recognition of scholarly accomplishments, including national or international prominence in research/creativity, scholarship and/or leadership in their discipline.

Receiving the honor in 2007 were College of Arts and Sciences Dean Peter M. Sherwood,

psychology professor Charles I. Abramson and sociology professor Riley Dunlap, as well as Dan S. Rickman, professor and OG&E chair in economics and legal studies, and Carey N. Pope, professor and Sitlington chair in toxicology and head of physiological sciences at the Center for Veterinary Health Science.

"Each of them have demonstrated extraordinary accomplishments and made significant contributions to their academic disciplines, and we are pleased to have them as part of our university community," said interim OSU System CEO and President Marlene Strathe.



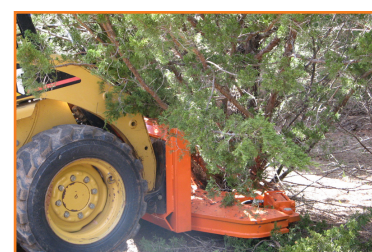
School of Hotel and Restaurant Administration, Human Environmental Sciences

Offers a bachelor's degree in hotel and restaurant administration, M.S. in hospitality administration and Ph.D. in human environmental sciences/hospitality option.

12 faculty and approximately 450 students

Department head: Dr. Richard Ghiselli (2007)

A history of hospitality: The school's teaching hotel, the Atherton, in 2004 became Oklahoma's first hotel accepted to the Historic Hotels of America, a National Trust for Historic Preservation registry.



Biosystems and Agricultural Engineering department, Agriculture/Engineering

Offers bachelor's, M.S. and Ph.D. degrees in biosystems engineering with biomechanical, bioprocessing/biotechnology, environmental/natural resource or food processing specializations at each level.

25 faculty and approximately 140 students

Department head: Dr. Ron Elliot (2001)

Cutting edge study: Students won the international AGCO Design Competition for the third time in four years in 2007 for a tree shear they developed for a Perkins manufacturer.