



ACCOMPLISHMENTS

A report to the OSU/A&M Regents from the Office of the OSU System CEO and President.

March 7, 2008



Message from Marlene Strathe

Our spring semester is well under way and the Oklahoma State University community continues to have many opportunities for celebration.

In February we spotlighted the research and scholarly activities of our faculty and students during Research Week 2008. Through interdisciplinary collaborations with academic institutions, government agencies, private businesses and industry, OSU researchers are developing new knowledge that is making a lasting impact on our world.

OSU hit an all-time high last year with sponsored program research expenditures in excess of \$245 million, \$122 million of which came in the form of external awards. OSU has long been recognized for not only excellence in instruction and outreach, but scholarly activity congruent with our land-grant mission. Research Week 2008 was a wonderful opportunity to not only celebrate scholarship at OSU, but to become better acquainted with the scholarly activities of our faculty and students.

OSU research touches virtually every area of study. Recent work includes research to explore using all types of perennial grasses as alternative fuel sources, the study of dating minerals from Antarctica that predict changes in sea level, the introduction of Oklahoma caviar from paddlefish, work that will accelerate the commercialization of nanomaterials, and research that ties child nutrition in Ethiopia to learning.

The OSU Foundation continues to build relationships with alumni and university friends that are bringing a new infusion of resources to the university. The Foundation is again on a path to a record level of private giving to OSU.

Very recently I had the opportunity to tour the geology teaching laboratories, which have been literally transformed by a very generous gift from Devon Energy. These new teaching laboratories have made a significant impact on the teaching and learning environment of our geology faculty and students.

Private partnerships will be increasingly important as public funding becomes more difficult to gain. All of OSU is appreciative of the efforts of our Foundation and its development officers, as well as numerous administrators and faculty members, for their continued efforts to increase our private support for OSU.

We are pleased that Oklahoma Gov. Brad Henry and Lt. Gov. Jari Askins will deliver our spring commencement

addresses on May 3, 2008, as we celebrate the hard work and accomplishments of our graduates with their families and friends.

In closing, I want to take this opportunity to welcome Burns Hargis as OSU's new president. It has been an honor to serve as interim president this past year and I greatly appreciate the wonderful support I have received from the entire OSU community.

I have never been more excited about the future of OSU and look forward to working closely with President Hargis as we all strive for Oklahoma State University to be recognized as one of our nation's leading land-grant institutions.



Dramatically altering the campus skyline, the crane that went up last month for the construction of the Interdisciplinary Science Research Building stands more than 180 feet tall on a 20-by-20-by-5 foot concrete reinforced foundation supported by piers that reach 40 feet into the ground. Together, its boom and balance arm almost span the length of a football field.

A&S Success Center Hosts Grand Opening

The grand opening of the College of Arts and Sciences Student Success Center was held Jan. 24.

The center is housed on the second floor of the historic Life Sciences East building and brings together academic, pre-professional and career advising facilities in one seamless operation. Included are student academic services, career services, outreach, and the pre-law and pre-health advising centers.

“This center is the realization of a dream for the College of Arts and Sciences,” said Peter M.A. Sherwood, Regents Professor and dean of the college. “One of the key goals of our college is to have as much contact as possible between students, faculty and advisers, and this center plays a key role in making that happen. Now students can visit one place and find all the resources they need.”

The center houses 10 academic advisers, three career consultants and student interns, as well as seven outreach staff.

One of the center’s main features is an academic information center that permits students to become familiar with academic disciplines and programs offered at OSU. A career resources library provides job and internship search information. Students pursuing admission to medical, dental or allied health programs now can access up-to-date resources and professional guidance. The facility is wireless and includes four computer stations for student use.

OSU-CHS Forensics Sciences Accredited

The OSU Center for Health Sciences’ graduate program in forensic sciences has been accredited by the American Academy of Forensic Sciences after an extensive audit process through its Forensic Science Education Programs Accreditation Commission. It is one of only eight graduate programs nationwide to receive the designation.

“This formal evaluation shows prospective students and employers that our forensic biology and forensic toxicology programs meet the high standards of quality set by the AAFS and the FEPAC commission,” said Robert Allen, chair of the department. The program offers master’s degrees in forensic sciences and in forensic sciences administration. A graduate certificate in forensic document examina-



Arts and Sciences Student Council members served as hosts for the grand opening of the college’s Student Success Center in Life Sciences East on Jan. 24. With council members are Susan Weir, front far left, Student Academic Services director; Karen Smith, back far left, senior academic adviser; Peter M.A. Sherwood, Regents Professor and dean, third from right; and OSU Interim President Marlene Strathe, far right.

OSU-Tulsa Hopes to Add 15 Degree Programs

OSU-Tulsa officials have requested approval from the Oklahoma State Regents for Higher Education to make available 15 additional undergraduate degrees for Tulsa-area students.

At the Feb. 18 OSU-Tulsa Board of Trustees meeting, President Gary Trennepohl said OSU-Tulsa needs to offer undergraduate degrees in areas that serve Tulsa students and employers.

“Expanded degree offerings will enable OSU-Tulsa to serve additional student and employer interests, as well as provide opportunities for the increasing number of Tulsa Community College students participating in the Tulsa Achieves program,” Trennepohl said. “With the outstanding success of Tulsa Achieves, we have to be

prepared for the influx of students who want to earn a four-year degree in Tulsa.”

Trennepohl said university officials examined the number of TCC students majoring in various degree tracks to determine which degrees OSU-Tulsa needs to offer to serve those students.

The academic programs, which would be implemented as faculty and physical resources become available, would include degrees in English, biological sciences with pre-med and pre-vet options, sociology, civil engineering, history, psychology, mathematics, accounting, chemistry, physics, secondary education and more.

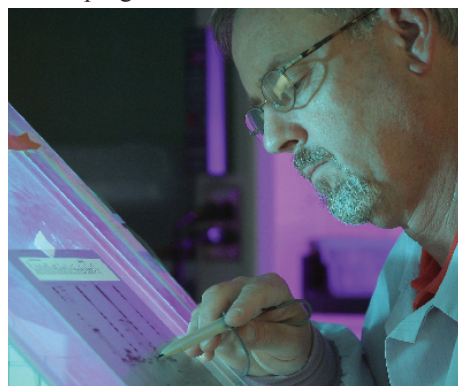
OSU-OKC Creates Safety and Preparedness Center

During this time of natural and human disasters and the need for safety awareness, OSU-OKC has created a new center to focus on education and training for business and industry, emergency responders and the general public.

The Center for Safety and Emergency Preparedness will capitalize on existing programs and experience within the OSU-OKC campus. It also will partner with private and public entities that share an interest in furthering knowledge and expertise in areas related to safety and emergency preparedness.

Program tracks within the center will include advanced driver training for business and industry, general public and emergency responders; simulation training; homeland security; business continuity; and community outreach programs and events.

tion is also offered. The forensics program is largely online and also opens enrollment to non-program students.



Robert Allen, chair of the OSU-CHS graduate program in forensic sciences, works in the OSU-CHS forensics research lab.

OSU-Okmulgee Partners with Rolex

OSU-Okmulgee's highly recognized watchmaking program has moved into a new era thanks to the backing and generosity of Rolex, the world's premier name in watches.

With a \$1 million, five-year commitment, Rolex has become the exclusive underwriter of the OSU-Okmulgee Watchmaking and Microtechnology program. Established in 1946, the OSU-Okmulgee program has developed an excellent reputation both locally and nationally in serving the needs of the watchmaking industry.

"The decision by Rolex to become the exclusive industry financial underwriter of our watchmaking program provides us the opportunity to fulfill our long-standing goal of offering a true world-class program," said Bob Klabenes, OSU-Okmulgee president.



"Rolex is not only the largest single luxury watch brand in the world, but it is also the brand most widely recognized and held in the highest esteem," Klabenes said.

"Our students, faculty and staff feel both privileged and humbled by Rolex's decision to partner with our program. This is an historic step."

Rolex has led the industry in providing funding for the training and education of skilled watchmakers since 2000.



In celebration of the 60th Anniversary of the College of Veterinary Medicine, a delegation from the Center for Veterinary Health Sciences hosted approximately 50 legislators for lunch on Feb. 12. Michael Lorenz, veterinary center dean, made a presentation to inform legislators about the Next Level Initiative to take the center to the next level in coming years. Among attendees were Bill Johnson, Dean Lorenz, Rep. Phil Richardson, Charles MacAllister, Rep. Lee Denney and Chris Ross.

OSU Medicine, UCO Announce Joint Program

The OSU College of Osteopathic Medicine and the University of Central Oklahoma have begun an Early Assurance Program, a joint pilot program that helps UCO's pre-medical students to better plan admittance to the medical school.

"The pilot program focuses our recruitment efforts with prospective medical students early in their academic careers," said Leigh Goodson, vice president for enrollment management and external affairs.

Curriculum, grades, prerequisites, grade point averages and enrollment criteria must be met, along with Medical College Admissions Test scores, interviews, recommendations and other requirements, in order to be accepted into OSU's osteopathic medical school.

OSU is on the Kiplinger 100 list of top colleges for 2008. The annual ranking uses costs for in and out-of-state students as well as quality measures or financial aid measures to select the top higher ed institutions.

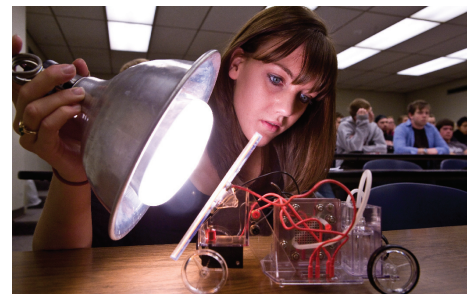


Photo by James Schammerhorn

Cushing, Drumright, Glencoe, Morrison, Perkins and Stillwater High Schools, as well as OSU students, were invited to the recent Cyberspace Research Summit.

Area Students Learn About Scientific Research

High school and college students from the Stillwater area learned about the future of energy on Feb. 8 at the Cyberspace Research Summit at OSU. The summit was an interactive conference designed to get high school and college students interested in scientific research, according to LeGrande M. Slaughter, chemistry assistant professor.

The summit was funded by the National Science Foundation through a five-year grant awarded to Slaughter in 2007. The grant is aimed at creating an educational outreach program that introduces rural Oklahoma high school students to scientific research.



OCAST director Michael Carolina, Dean of Libraries Sheila Grant Johnson, author Gail Buckley, and Kay Bost, head of OSU Special Collections, admire a first edition copy of "Narrative of Sojourner Truth, A Northern Slave, Emancipated from Bodily Servitude." The book is a highlight of the Edmon Low Library's new Black American Military Experience Collection.



OSU's own American Idol, Kyle Ensley of Valliant, recently met Lisa Kudrow (aka Phoebe from "Friends") prior to his invited appearance on the Ellen Degeneres Show. After being one of the last to be cut from the final 24 American Idol competitors, the OSU political science senior is in demand. He has been interviewed on Good Morning America and was invited to sing the national anthem at the Oklahoma City RedHawks opening game in April. He also received a "makeover" from a Beverly Hills salon for the TV show Extra.

OSU Students Help in International Recruiting

International Student Organization president Hui Hui Ang of Malaysia and public relations officer Phuong Le of Vietnam helped with international recruitment over winter break by visiting OSU partner institutions in their home countries.

"One of our greatest strengths is Student Affairs, because these divisions barely exist in some countries," said Tim Huff, International Students and Scholars manager and coordinator of the student trips. "We really take good care of our students and sometimes it takes a student from a particular country to explain that to other student applicants from that same country."

Ang visited with students and officials at Inti College in Malaysia in an attempt to help rebuild our connections. Malaysian numbers in the U.S. have declined greatly over the past decade and were once the largest international population at OSU, but now OSU has fewer than 50 students.

According to Huff, Ang's efforts have had an immediate impact resulting in 13 contacts from interested Inti students.

Le accompanied Keith Teague, electrical and computer engineering professor and head, on visits to Vietnam institutions and served as his interpreter. Vietnam has been

the largest growing OSU international population for the past three years, and is now OSU's fifth highest international population with 80 students. Teague hand-carried five applications for admission back to OSU.

Teague's visit last year also added five Vietnamese Ministry of Education Scholars to his graduate program.



Genipha Bacoulou, center, the International Student Organization vice president, was dressed by members of the Korean Student Association in their traditional attire during the 2008 International Bazaar. The annual event was hosted by Student Affairs and ISO. Among attendees were 10 international students and staff from OSU-Okmulgee.

In recognition of TRiO Day, the OSU Educational Talent Search program held a children's book drive on campus to collect new or "gently used" books for children ages 3 to 9. The donated books were given to the SoonerStart program during its annual TRiO Day celebration at the State Capitol on Feb. 13, and then distributed to children throughout the state.

OSU-OKC's Phi Theta Kappa international honor society, one of 40 chapters in the Oklahoma-Arkansas region, was named "Most Distinguished Chapter." Individual awards were won by students Debra Moses and Mike Goldman, and advisers Armando Cruz-Rodz and Jim Harned.

For the fifth consecutive year, OSU-Tulsa hosted the Engineering Design Challenge on Feb. 21, drawing more than 200 participants from several area schools who designed, built and raced a self-propelled, motorized watercraft during the event, according to Carl Latino, electrical engineering associate professor.

Artwork by several OSU students titled "Right Here, Right Now" was on exhibit at Exhibit One in Stillwater, including several 2-D and 3-D pieces. The OSU artists also were featured in the February issue of Stillwater Living Magazine.



OSU-Okmulgee Air Conditioning and Refrigeration Technology instructor Paul Margwarth, left, congratulates Broken Arrow student Jeff Hamon for receiving a \$900 2008 CareerConnect Scholarship from Johnson Controls, Inc.

Michaela Hagerty, Blue Springs, Mo., apparel design and production junior, was selected a Sports Illustrated on Campus Cheer Leader of the Week.

Nicole Grimaldi, Rossmore, Calif., marketing senior and Cowgirl soccer member, received one of 29 NCAA Post-graduate Scholarships of \$7,500 for student-athletes who compete in fall sports. The scholarships are awarded to student-athletes who excel academically and athletically and who are in their final year of intercollegiate athletics competition.

Amarjit Mishra, Lung Biology and Toxicology Laboratory graduate student, received a Society for Experimental Biology and Medicine Young Investigator Award. The \$500 allows him to present his research at Experimental Biology 2008 in San Diego, Calif.

OSU-Tulsa opened a Graduate Student Services Center to provide a centrally located support office. Prospective students can learn about admission requirements and enrollment deadlines for all graduate programs, and staff members will assist students with academic paperwork, provide academic counseling and arrange visits with faculty advisers.



Southern Methodist University students, along with their adviser and NPHC President Jennifer Jones, presented the workshop “You are What You Wear” at the 31st Annual Big 12 Conference on Black Student Government.

OSU Hosts Big 12 Conference

The 31st annual Big 12 Conference on Black Student Government, hosted by OSU’s African American Student Association, drew approximately 750 students and advisers representing black student organizations from all the Big 12 universities and more than 30 other institutions to Stillwater.

Conference activities were designed to foster effective cultural, social and political leadership with motivational speakers, educational workshops and professional development and networking opportunities, according to Tulsa international business senior Ty Scyffore, Afro-Am president and conference committee chair.

Keynote speakers included National Public Radio commentator and former Washington Post reporter Patrice Gaines; engineer, author and inventor Calvin Mackie; Judge Vicki Miles-LaGrange; OSU alumnus Rev. Bryan Carter; OCAST executive director Mike Carolina; and motivational speaker and businessman Stedman Graham.

Cross Country Teams Recognized for GPAs

Oklahoma State’s men’s and women’s cross country teams have received recognition as 2007 NCAA Division I All-Academic teams, according to the U.S. Track and Field and Cross Country Coaches Association.

For this honor, teams must have competed and compiled a team score at an NCAA Regional Meet and have a minimum 3.00 team cumulative grade point average.

The Cowboys won the NCAA Midwest Regional title en route to a third-place

finish at the NCAA Championship and posted a 3.26 team grade point average and finished with the second-highest GPA among Big 12 schools.

The Cowgirls took fifth at the NCAA Midwest Regional meet and compiled a 3.31 team grade point average to easily meet the criteria.

Cowboys Ryan Vail and David Jankowski also were named to the USTFCCCA’s All-Academic Team.

Charlize Foong, Malaysia; **Jacob Gamboa**, Yukon; and **Marisa Butler**, Parsons, Kan., all management seniors, won the Oklahoma State Human Resources Games in Oklahoma City on Feb. 16 and will compete in the Southwest Regional Human Resources Games. Their adviser is Tom Stone.

Student chapter members of the American College of Osteopathic Pediatricians welcomed third to fifth grade students and their teachers from Eugene Field Elementary School for an afternoon **Mini-Medical School for Kids at OSU-CHS**. Sessions on nutrition, healthy eating, anatomy, exercise and obesity were held and teachers received materials for classroom follow-up.

The **OSU Wind Ensemble** recently was the featured wind band at the 37th Japan Band Clinic in Hamamatsu City, Japan. The OSU Chamber Singers and Concert Chorale will tour Italy this spring, and they also were invited to perform at Carnegie Hall in February 2009.

OSU Army ROTC is at a 17-year enrollment high. In 2007, the Department of Military Science awarded 20 four-year freshman scholarships.

University Advertising students in journalism and broadcasting are getting valuable real-world experience thanks to alumnus R.W. McQuarters, New York Giants defense, who selected the student-run ad agency to design his new real estate company’s logo. The 12 UA students are unpaid but gain real-world advertising experience. Profits from UA jobs fund OSU Ad Club activities.

Lauren White, Idabel environmental science freshman, Choctaw tribal member and Oklahoma Lewis Stokes Alliance for Minority Participation Scholar, has been chosen to take part in the Avila Research Experiences for Undergraduates program this summer with fieldwork in Dominica.



Kelly Ingold and Brad Blackim discuss repair strategies for the 2006 Ford Mustang that State Farm Insurance Co. recently donated to OSU-Okmulgee’s Automotive Collision Repair Program to use as a learning project and a recruiting tool.

Student Government Association President **Carol Phillips** represented OSU-OKC students when she introduced Co-President Pro Tempore Glenn Coffee to Higher Education Day participants at this year’s session at the state capitol on Feb 27.

In recognition of contributions to residence hall living and to the university community, **Erica Smith**, Stillwater educational leadership studies graduate student, received the Bob Huss Outstanding Graduate Student Award for Oklahoma at the 2008 Southwest Association of College and University Housing Officers conference, and **Deleca Allcorn**, Inola human development and family science junior, received the Gene Ward Outstanding Student for Oklahoma.

OSU’s German, French and Russian Clubs held a Mardi Gras celebration on Feb. 6 on the library lawn. Each club sold a selection of native foods, according to Brandon Fimple, Vinita hotel and restaurant administration senior.

Faculty/Staff News

The OSU-OKC Public Service degree program's annual "Spring Gathering" took place March 4 in the Student Center. The event celebrated public service and featured Kirk Humphries, former Oklahoma City mayor, presenting "If You Could Change One Thing."

Marty High, chemical engineering associate professor, recently completed a juris doctorate and has created what is believed to be the nation's only legal studies in engineering curriculum.



OSU-Okmulgee held a "Spend an Afternoon with Pete" for high school seniors and parents on Feb. 10 to provide help in understanding the types of financial aid available to attend college and how to apply. "Pistol Pete," the OSU mascot, welcomed those attending, according to Kinya Peverley, admissions director.

A team of OSU veterinarians at the Oklahoma Animal Disease Diagnostic Laboratory published a paper in the *Journal of Clinical Microbiology* detailing their discovery of a new canine virus in the U.S. Led by **Sanjay Kapil**, they are the first to describe the CPV type 2c variant, which also kills adult dogs in addition to puppies by attacking the heart and intestines. Though not yet confirmed, the virus has been blamed for many U.S. canine deaths, including 600 puppies at a dog breeding operation.



OSU approved Beta Beta Beta (TriBeta), its first national biological honor society for life sciences students. **Don French**, zoology professor, far left, is adviser, and **Cedric Fry**, Vinita senior, far right, is president. With them are **Loren Smith**, zoology department head; **Julie Golla**, McAlester senior; **Andrew Mixson**, Vinita senior; **Kendra Chillemi**, Stillwater senior; and **Melissa Gentry**, zoology academic adviser.

Declines in **fishing and hunting license** sales around the country for nearly a decade have caused wildlife and fisheries experts to look for ways to entice outdoor enthusiasts back to the outdoors. OSU's Department of Natural Resource Ecology and Management hopes to help find answers for the Oklahoma Department of Wildlife Conservation.

An OSU researcher is part of a team that discovered a new cancer-fighting compound praised for its potential to revolutionize cancer prevention and treatment. **Darrell Berlin**, Regents Professor of chemistry, created the compound in collaboration with **Doris M. Benbrook**, OU Health Sciences Center molecular biologist and biochemist. It is slightly related to Vitamin A with components resembling products made by the human body. Research confirms it destroys 11 types of cancer cells and its developers are excited about results on kidney, ovarian and liver cancer cells. More development and clinical trials are needed before the compound is ready to be administered as a drug.

Dale Alspach, mathematics department head; **Dana Brunson**, mathematics systems administrator and lecturer; **Cynthia Francisco**, mathematics lecturer; and **Gail Gates**, associate vice president for undergraduate education, are working with the National Center for Academic Transformation to redesign the delivery of college algebra at OSU with the goal of increasing the number of students who achieve an acceptable level of proficiency with algebra.

Ten students and two faculty from the architecture program of the Universidad Peruana de Ciencias of Lima, Peru, arrived Feb. 16 to take part in a Studio Exchange Program with the OSU Landscape Architecture program for three weeks in association with the Design IV studio under the direction of **Michael Holmes**. Students will prepare a master plan and designs for an archeological site in central Peru. At the end of the spring semester, the OSU students and a faculty member will visit Peru to work with UPC students. This is the only landscape architecture program in the U.S. to have an exchange study abroad program with a South American university architecture school. The program was started 10 years ago by **Charles Leider**, professor and director of the OSU Landscape Architecture Program.

The Aviation and Space Program in the College of Education received \$106,000 from the OSRHE to fund the OSU Aerospace High School Summer Academy for a three-year period, according to **Steve Marks**, professor and program coordinator. This academy brings 30 high school students on campus for two weeks in June to study aviation and aerospace topics and field trips.

Representatives from law enforcement agencies throughout the state attended the **15th Annual Buckledown Awards** on Feb. 14 at OSU-Tulsa. Oklahoma's top police officers were recognized for saving hundreds of lives, and officers with exceptional work in traffic safety, impaired driving and occupant protection and child safety were honored. The event is sponsored by State Farm Insurance Companies, Saint Francis Hospital, Tulsa Safe Kids Coalition, MADD and OSU-Tulsa.



OSU Interim President **Marlene Strathe** congratulated **Kim Brock** on his induction into the Oklahoma Pork Hall of Fame. Brock has spent nearly 30 years as herd manager in charge of the OSU Swine Research and Education Center on the outskirts of Stillwater, and his 1981 and 1991 OSU livestock judging teams won national championships. He said his career work at the swine center has three purposes: teaching, research and raising the best purebred swine.

OSU-OKC received an OKC Public Schools Foundation "2008 Perfect Partnership Award" on Feb. 28 for participation in the Westwood Elementary "Lunch Bunch" program.

Lee Manzer, marketing professor, was nominated by a student and honored in Austin with the Acton Foundation's Award for Excellence in Entrepreneurship Education. He attended the two-day seminar in Austin on entrepreneurship teaching with Tulsa management and entrepreneurship senior **Corey Else**.

OSU-Tulsa's President **Gary Trennepohl** hosted a Legislative luncheon on Jan. 17 for the Tulsa-area delegation. Legislators participated in a tour of the Helmerich Advanced Technology Research Center.

Glenn Muske, design, housing and merchandising associate professor, is featured in a CNN/Fortune article on couples who run small businesses.

Carey Pope, Regents Professor, Physiological Sciences Department head and Sitlington Endowed Chair in Toxicology, was mentioned in an article about nanoparticle self-lighting photodynamic therapy for deep cancer treatment. He is one of five researchers involved in this national collaborative.

Joann DesLauriers, adjunct instructor and early childhood education specialist, and **Dianna Ross**, early childhood education specialist and interim director of the OSU Child Development Lab, received National Board Certification from the National Board for Professional Teaching Standards.

Bin Liang, sociology assistant professor, has a new book, "The Changing Chinese Legal System, 1978-Present: Centralization of Power and Rationalization of the Legal System," that examines dramatic changes that happened to the Chinese legal system in the reform era.

The College of Education and the Oklahoma Technology Association sponsored the annual Oklahoma State Student Media Festival in the Cox Convention Center on Feb. 6. This year's festival featured media projects ranging from Web sites and live action video to still photography from 729 K-12 Oklahoma students, according to **Susan Stansberry**, educational technology associate professor.

Michael Davis, physiological sciences associate professor, was named chair of the Scientific Review Committee for the American College of Veterinary Internal Medicine, which administers the competitive grant program.

The Tulsa Chapter of the Association for Women in Communications will honor **Jami Fullerton**, OSU-Tulsa journalism and broadcasting associate professor, on May 6 as a 2008 Newsmaker.

Steve Marks, professor and aviation and space program coordinator, was one of the instructors that conducted the NASA Winter Story Teacher Workshop held in Yellowstone National Park in January. Twenty-five teachers from across the U.S. conducted studies and experiments that relate to the story of winter and NASA's research into extremophiles.

The presentation "Small Parasite...Serious Disease," by **Susan Little**, professor and Krull-Ewing Endowed Chair in Veterinary Parasitology, was selected at the 2008 Western Veterinary Conference to be featured in their daily one-hour broadcast called Conference TV Journal.

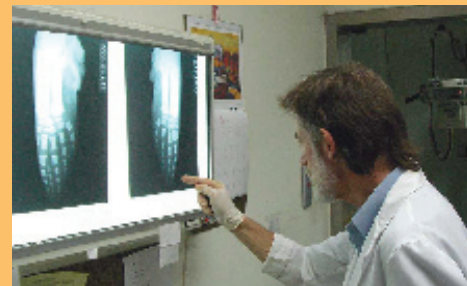
Shiretta Ownbey, Human Environmental Sciences professor and associate dean of Academic Programs and Services, is among 23 leaders selected as Fellows of the Food Systems Leadership Institute. Fellows include leaders from education, industry and government who are engaged in diverse segments of the food system.

Jeffery L. White, chemistry associate professor, was awarded a three-year grant from the National Science Foundation for research titled "Polyolefin Miscibility: Novel Chain-Level Experiments to Create Miscible Blends." The \$320,000 award is the third consecutive three-year grant he has received in this subject area from NSF, and upon completion in 2011, it will represent a nine-year study funded at nearly \$1 million.



Michael Roton, past recipient of the Governor's Award for Disability Employment, is one of six employed by OSU Student Union Dining through the Payne County Sheltered Workshop. SU Dining recently received the top business award from the Oklahoma Association for Persons in Supported Employment.

The **English Department**, editorial home of nationally-known scholarly publications, "Milton Quarterly" and "Cimarron Review," has an online journal dedicated to theoretical approaches to film and media, "World/Picture." The screen studies program also sponsors an annual conference of film and media scholars, the World/Picture Conference.



Alastair Watson, veterinary anatomy professor, experienced a once-in-a-lifetime discovery when describing the ninth and tenth DNA-confirmed specimens of tropical bottlenose whales (*Indopacetus pacificus*), which included a mature female and her calf. He and the collaborative team in Taiwan were surprised to find that the young whale had a polydactyly, or sixth finger, on his flipper, which is extremely rare.

Tom Stone, management professor, was appointed associate editor for *Career Development International Journal*. Stone is also the program chair of the Organization Behavior Division of the Administrative Science Association of Canada.

Allen Applett, chemistry associate professor, was chosen by the American Ceramic Society for its "Profiles in Excellence" program that highlights members who have made outstanding contributions to the ceramic community.

Yonglin Jiang, history assistant professor, received the Charles W. Ryskamp Fellowship from the American Council of Learned Societies to research law and society in Ming, China. **Jason Lavery**, history associate professor, was named a Fellow of the Institute for Advanced Study at the University of Helsinki and will research the spread of Lutheranism in 16th century Finland.

OSU-OKC Mathematics Department head **C. J. Frederick** has been invited to be an Advanced Placement reader for calculus.

Four history faculty hold leadership positions in professional societies: **Bill Bryans** is president of the National Council of Public History; **Jason Lavery** is vice president and president-elect of the Society of Historians of Scandinavia; **Ronald Petrin** is president of the Southwestern Historical Association; and **Yonglin Jiang** is president-elect of the Society for Ming Studies.



James D. "Jim" Cobb, Juanita L. "Bobbie" Nofflet, and Eddie Sutton were inducted into the OSU Alumni Association Hall of Fame during a ceremony held Feb. 22 at the National Cowboy and Western Heritage Museum in Oklahoma City. More than 350 people were in attendance.

Alumni Induct Three to Hall of Fame

For the first time in its 50-year history, the OSU Alumni Hall of Fame Induction Ceremony was held in Oklahoma City at the National Cowboy and Western Heritage Museum on Feb. 22.

Inductees for 2008 were humanitarian and volunteer Juanita L. "Bobbie" Nofflet of Orlando, Fla., who received degrees from Oklahoma A&M in 1948 and OSU in 1960; innovative engineer and successful business leader James D. "Jim" Cobb of Oklahoma City, who received degrees from OSU in 1959 and 1960; and legend-

ary college basketball coach Eddie Sutton of Stillwater, who received degrees from OSU in 1958 and 1959, and who recently came out of retirement to win his 800th game as coach at the University of San Francisco.

Induction into the OSU Alumni Hall of Fame is the highest honor bestowed by the OSU Alumni Association. It is given as recognition of outstanding professional and personal achievement bringing honor and distinction to Oklahoma State University.

Research Establishes New Benchmarks

OSU established new benchmarks in research expenditures and external research funding won by faculty this past year, according to Stephen McKeever, OSU Research and Technology Transfer vice president.

"It has been a banner year for OSU in sponsored programs and research. The totals for sponsored program awards for fiscal year 2007 are the highest in OSU history," he said.

Of a record \$245 million in sponsored program expenditures for FY2007, \$128 million was research expenditures or funds spent in support of research, including equipment purchases, research salaries, construction and renovation and supplies. External awards for sponsored programs, including research, outreach and extension, was a record high \$122 million for the university.

Highlight awards included the latest installment to William Barrow at OSU's Center for Veterinary Health Sciences on a renewable contract valued at \$40 million from the National Institute of Allergy and Infectious Diseases and \$1.5 million in

National Science Foundation grants after OSU faculty went three-for-three in its Major Research Instrumentation competition. OSU's University Multispectral Laboratory in Ponca City also received a major contract.

OSU research expenditures per faculty member peaked in 2007, and last year, OSU achieved new records in technology transfer, including the Association of University Technology Managers' national average for dollars spent versus inventions/intellectual property disclosure.

"The national average, according to AUTM statistics, is for every \$2.4 million a university spends on research, there should be one invention," McKeever said. "OSU had never reached the national average until this year when we achieved a disclosure for every \$2.3 million."

OSU had 30 licenses that yielded more than \$1 million in license income. "The Coskata Inc. and General Motors announcement this past weekend is really exciting for us because, if successful, it stands to be OSU's biggest royalty earner," he said.

OSU Foundation Announces New Gifts

The OSU Foundation has announced several new gifts to OSU:

The AT&T Foundation, the telecommunications giant's philanthropic arm, awarded OSU an \$11,000 Excelerator grant to create the AT&T Corporation Resource Library and the AT&T Corporation Signing Pals program. The initiatives will significantly boost technology and sign language capabilities within OSU's English Department and enable the university to provide educational resources and services for students, children and the public.

The resource library and its electronic and written materials will play an important role in improving receptive and signing skills of students pursuing degrees in American Sign Language.

The Signing Pals program will target K-12 children and allow participants to connect with others by using web cameras and software that utilize instant messaging-type systems. Previously, no program had existed that gave deaf children access to improved language models.

Maintaining its land-grant mission, OSU will attempt to reach a large portion of the 33,000 citizens in the region who are deaf or hard of hearing. The new resources and technology will support collaboration with state agencies, other colleges and universities offering degrees in ASL and interpreting, public school districts with deaf students, and the public.

The Questar Corporation, a natural gas focused energy company in Salt Lake City, donated \$18,000 for the continued restoration efforts of the geology field camp in Colorado that was destroyed by a flood in summer 2006. The gift will aid in rebuilding onsite living quarters for the camp's faculty and staff, and brings Questar's total contribution to the field camp project to \$36,000.

It has also committed \$15,000 to establish the Questar Fellowship Fund to provide scholarships for geology graduate students.

On behalf of the Oklahoma City Mercy Work Foundation, Patty Whitecotton made a gift of \$38,000 to provide annual support for the Cohn Family Shelter for Small Animals facility operations budget. The Mercy Work Foundation has been an ongoing partner in supporting the perpetual care of animals at the CVHS.